



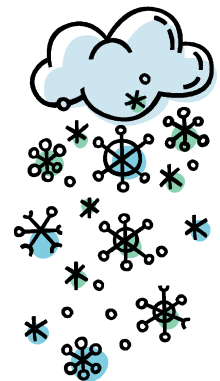
Re-Scheduling CPSE/CSE Meetings

Please be aware that changing CPSE/CSE meeting appointments can be difficult to rearrange and/or re-schedule. Please try to attend your child's CPSE/CSE meetings as scheduled. If you are unable to attend, but are able to participate by phone, we are happy to accommodate you. Please let our office know if you would like a phone conference. Be sure to include the phone number you would like to be reached at.

Inclement Weather

If your child's annual review is scheduled during a time that school is delayed or closed due to weather, the meeting will be rescheduled. If your child's meeting start time falls on or later than the 1 or 2 hour delay start time, we will hold the CPSE/CSE meeting as planned.

Example: If school was delayed 1 hour and your meeting was scheduled for 10:00 am, we would plan to hold the meeting as scheduled. All meetings scheduled prior to 10:00 am would have to be re-scheduled and you would receive a new notice.



School Delay Start Times

One Hour Delay – School starts at 10:00 am

Two Hour Delay – School starts at 11:00 am

If you have any additional questions or concerns, please call the CPSE/CSE Office at 756-5200 ext. 3033 or 3082.